

Mondi Paper Sales GmbH - Uncoated Fine Paper

Marxergasse 4a
AT - 1030 Vienna

has been assessed and certified as meeting the requirements of the standard

PEFC - Chain of Custody

PEFC ST 2002:2013 - "Chain of Custody of Forest Based Products - Requirements" - dated 24/05/2013
PEFC ST 2001:2008, Second Edition - "PEFC Logo Usage Rules - Requirements" - dated 26/11/2010
as amended and published on www.pefc.org

for the products detailed in the scope below

**Trade of PEFC certified paper products, with outsourced storage, using
the physical separation method.**

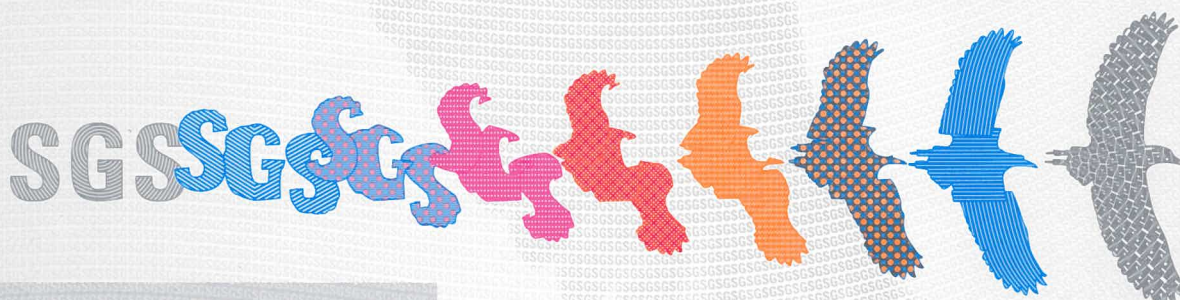
This certificate is valid from 18 May 2017 until 17 May 2022
and remains valid subject to satisfactory surveillance audits
Recertification audit due before 25 April 2022
Issue 9. Certified since June 2008

Authorised by

[Signature] *[Signature]*

SGS Société Générale de Surveillance SA
Technoparkstrasse 1 8005 Zurich Switzerland
t +41 (0)44 445-16-80 f +41 (0)44 445-16-88 www.ch.sgs.com

Organisations with a valid PEFC chain of custody certificate can only use the PEFC Logo with unique
PEFC license logo number based on PEFC Logo usage license contract issued by the PEFC Council or
another entity authorised by the PEFC Council and in accordance with the PEFC logo usage rules.



Certificate CH08/0801

SGS

The organisation

Mondi Neusiedler GmbH

Theresienthalstrasse 50
AT - 3363 Ulmerfeld-Hausmening

has been assessed and certified as meeting the requirements of the standard

PEFC - Chain of Custody

PEFC ST 2002:2013 – "Chain of Custody of Forest Based Products – Requirements" – dated 24/05/2013
PEFC ST 2001:2008, Second Edition – "PEFC Logo Usage Rules – Requirements" – dated 26/11/2010
as amended and published on www.pefc.org

for the products detailed in the scope below

Purchase of wood pulp (PEFC certified, other material), manufacture and sale of PEFC certified office communication papers using the percentage method.

This certificate is valid from 8 March 2016 until 7 March 2021
and remains valid subject to satisfactory surveillance audits
Recertification audit due before 17 February 2021
Issue 7. Certified since June 2008

Authorised by

SGS Société Générale de Surveillance SA Systems & Services Certification
Technoparkstrasse 1 8005 Zurich Switzerland
t +41 (0)44 445-16-80 f +41 (0)44 445-16-88 www.ch.sgs.com

Organisations with a valid PEFC chain of custody certificate can only use the PEFC Logo with unique PEFC license logo number based on PEFC Logo usage license contract issued by the PEFC Council or another entity authorised by the PEFC Council and in accordance with the PEFC logo usage rules.



Page 1 of 1



This document is issued by the Company subject to its General Conditions of Certification Services accessible at www.sgs.com/terms_and_conditions.htm. Attention is drawn to the limitations of liability, indemnification and jurisdictional issues established therein. The authenticity of this document may be verified at <http://www.sgs.com/en/Our-Company/Certified-Client-Directories/Certified-Client-Directories.aspx>. Any unauthorized alteration, forgery or falsification of the content or appearance of this document is unlawful and offenders may be prosecuted to the fullest extent of the law.



Certificate CH08/0802

The organisation

Ybbstaler Zellstoff GmbH

3. Straße 1
AT - 3331 Kematen

has been assessed and certified as meeting the requirements of the standard

PEFC - Chain of Custody

PEFC ST 2002:2013 – "Chain of Custody of Forest Based Products – Requirements" - dated 24/05/2013
PEFC ST 2001:2008, Second Edition – "PEFC Logo Usage Rules – Requirements" – dated 26/11/2010
as amended and published on www.pefc.org

for the products detailed in the scope below

**Purchase of wood chips (PEFC-certified, other material), manufacture
and sale of PEFC certified pulp using the percentage based method.**

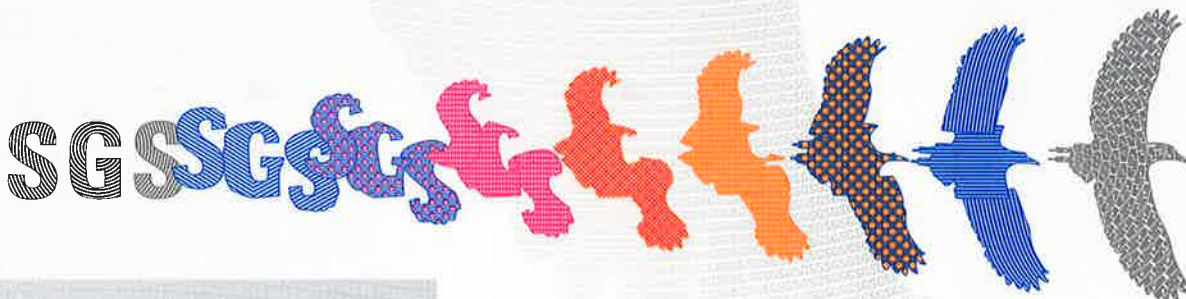
This certificate is valid from 8 March 2016 until 7 March 2021
and remains valid subject to satisfactory surveillance audits
Recertification audit due before 17 February 2021
Issue 8. Certified since June 2008

Authorised by

SGS Société Générale de Surveillance SA Systems & Services Certification
Technoparkstrasse 1 8005 Zurich Switzerland
t +41 (0)44 445-16-80 f +41 (0)44 445-16-88 www.ch.sgs.com

Organisations with a valid PEFC chain of custody certificate can only use the PEFC Logo with unique
PEFC license logo number based on PEFC Logo usage license contract issued by the PEFC Council or
another entity authorised by the PEFC Council and in accordance with the PEFC logo usage rules.

Page 1 of 1



Mondi SCP, a.s.

Tatranská cesta 3, 034 17 Ružomberok, Slovakia
has been assessed and certified as meeting the requirements of the standard

PEFC - Chain of Custody

PEFC ST 2002:2013 – "Chain of Custody of Forest Based Products – Requirements" – dated 24/05/2013
PEFC ST 2001:2008, Second Edition – "PEFC Logo Usage Rules – Requirements" – dated 26/11/2010
as amended and published on www.pefc.org

for the products detailed in the scope below

The production and sale of PEFC certified office, offset and packaging papers, pulp, chips and raw wood produced by the percentage based method (Section 6.3) based on Appendix 1 (certified material) of the chain of custody standard from purchased PEFC certified and PEFC Controlled sources and Controlled sources input materials (raw wood, chips, pulp).

Produkcia a predaj PEFC certifikovaných kancelárskych, offset a baliacich papierov, celulózy, štiepok a surového dreva, vyrobených podľa percentuálnej metódy (Sekcia 6.3) založenej na Prílohe 1 (certifikovaný materiál) z nakúpených PEFC certifikovaných a PEFC Controlled sources a kontrolovaných vstupných materiálov (surové drevo, štiepky, celulóza).

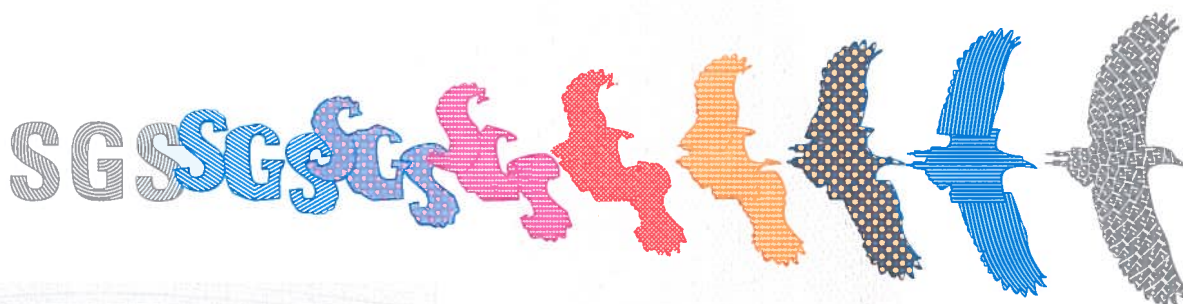
This certificate is valid from 3 January 2017 until 2 January 2022
and remains valid subject to satisfactory surveillance audits
Recertification audit due before 16 November 2021
Issue 5. Certified since February 2008

Authorised by



SGS Société Générale de Surveillance SA
Technoparkstrasse 1 8005 Zurich Switzerland
t +41 (0)44 445-16-80 f +41 (0)44 445-16-88 www.ch.sgs.com

Organisations with a valid PEFC chain of custody certificate can only use the PEFC Logo with unique PEFC license logo number based on PEFC Logo usage license contract issued by the PEFC Council or another entity authorised by the PEFC Council and in accordance with the PEFC logo usage rules.





FOREST
CERTIFICATION



KZ.O.00.0160

СЕРТИФИКАТ

FC-PEFC-0010

Данный сертификат соответствия подтверждает, что деятельность

АО «Монди СЛПК»

167026, РОССИЯ, Республика Коми, г. Сыктывкар, пр. Бумажников, д. 2

JSC "MSY"

2 bld., Bumazhnikov prospect, Syktvkar, Republic of Komi, RUSSIA, 167026

Соответствует требованиям сертификационной системы
PEFC Цепочки поставок лесной продукции:

- 01010 Круглые лесоматериалы (пиловочник, фанерный кряж, балансы)
- 07012 Офисная бумага

Действие сертификата распространяется на закупку
PEFC-сертифицированной древесины, производство и реализацию
PEFC-сертифицированной продукции деревообработки

Оценка проводилась на соответствие требованиям стандарта
PEFC ST 2002:2013 «Цепочка поставок лесной продукции – Требования»
(версия от 24.05.2013)

Дата выдачи

10.06.2016

Действителен до

09.06.2021

Руководитель органа по сертификации



П.В. Трушевский